

20 March 2023

WATER AND HERITAGE:

Connecting Past, Present and Future

SESSION 2

Connecting Water and Heritage: Conceptual, Methodological and Case study-based perspectives to Living history

10:00 – 12:00

ROUND TABLE 2

Carola Hein
MODERATOR

UNESCO Chair Water, Ports and Historic Cities

Sylvia Amann
Inforelais

The role of cultural quality for water futures

Matthias Wantzen

UNESCO Chair River Culture
Resetting values for mitigate the crisis of riverscapes

Nanco Dolman
Deltares

Opportunities for Blue-Green Infrastructure to enhance natural heritage in urban area

Maud van den Beuken
Artist, Rotterdam

Artistic practices for cultural transformation

Iris Bijlsma
RVO

The Valuing Water Concept

Opportunities for Blue-Green Infrastructure

To enhance natural heritage in urban areas – the case of Zwolle

Nanco Dolman, Deltares



Source: Zwolle Marketing

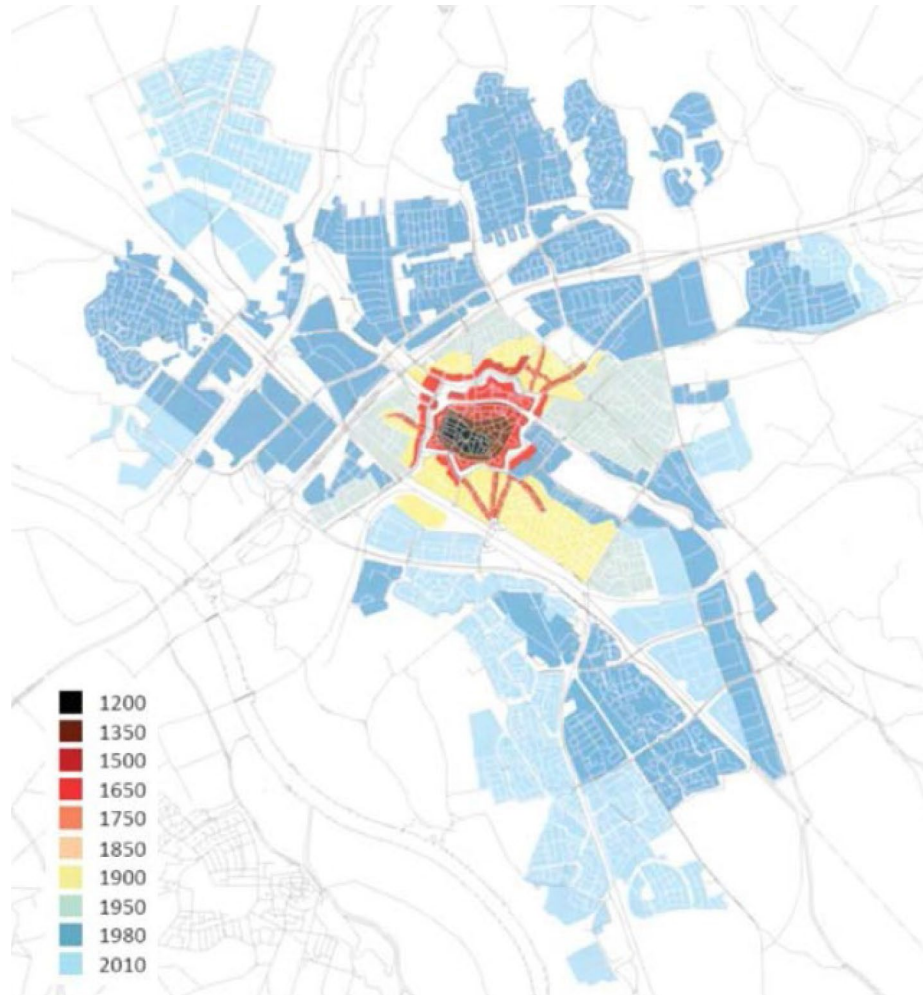
Monday 20 March 2023 – 10:00-12:00

Harlem Stage, 150 Convent Avenue, New York, NY 10031

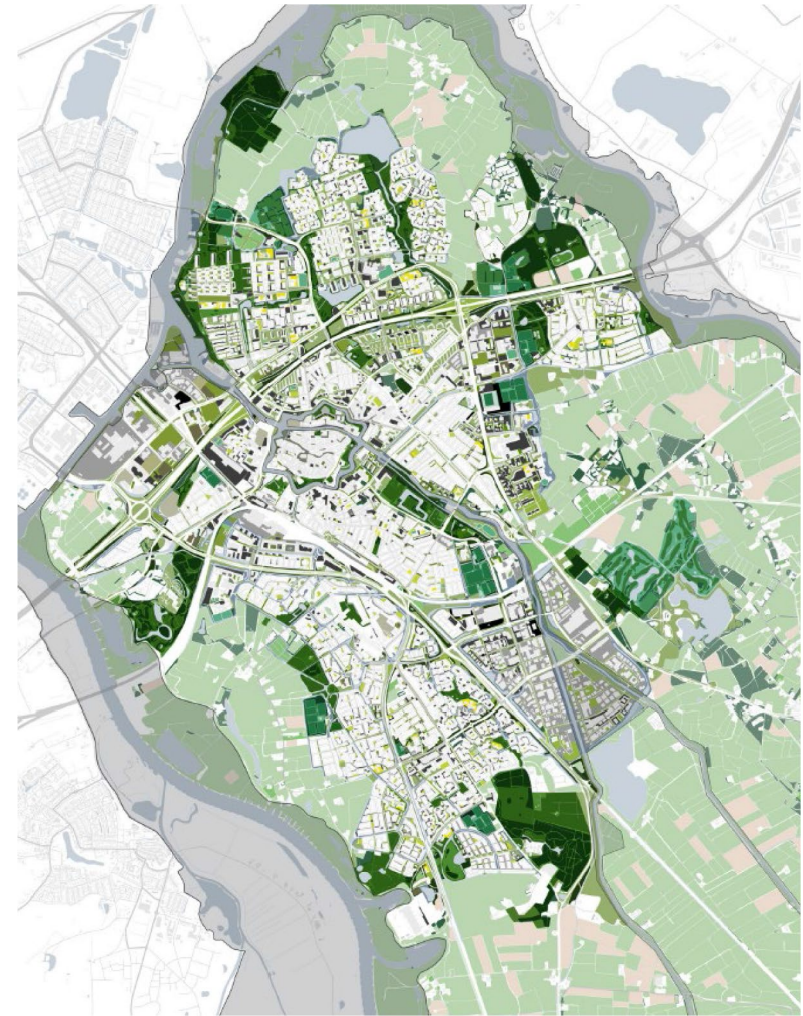
Zwolle in IJssel-Vechtdelta



Urbanization in a blue and green landscape

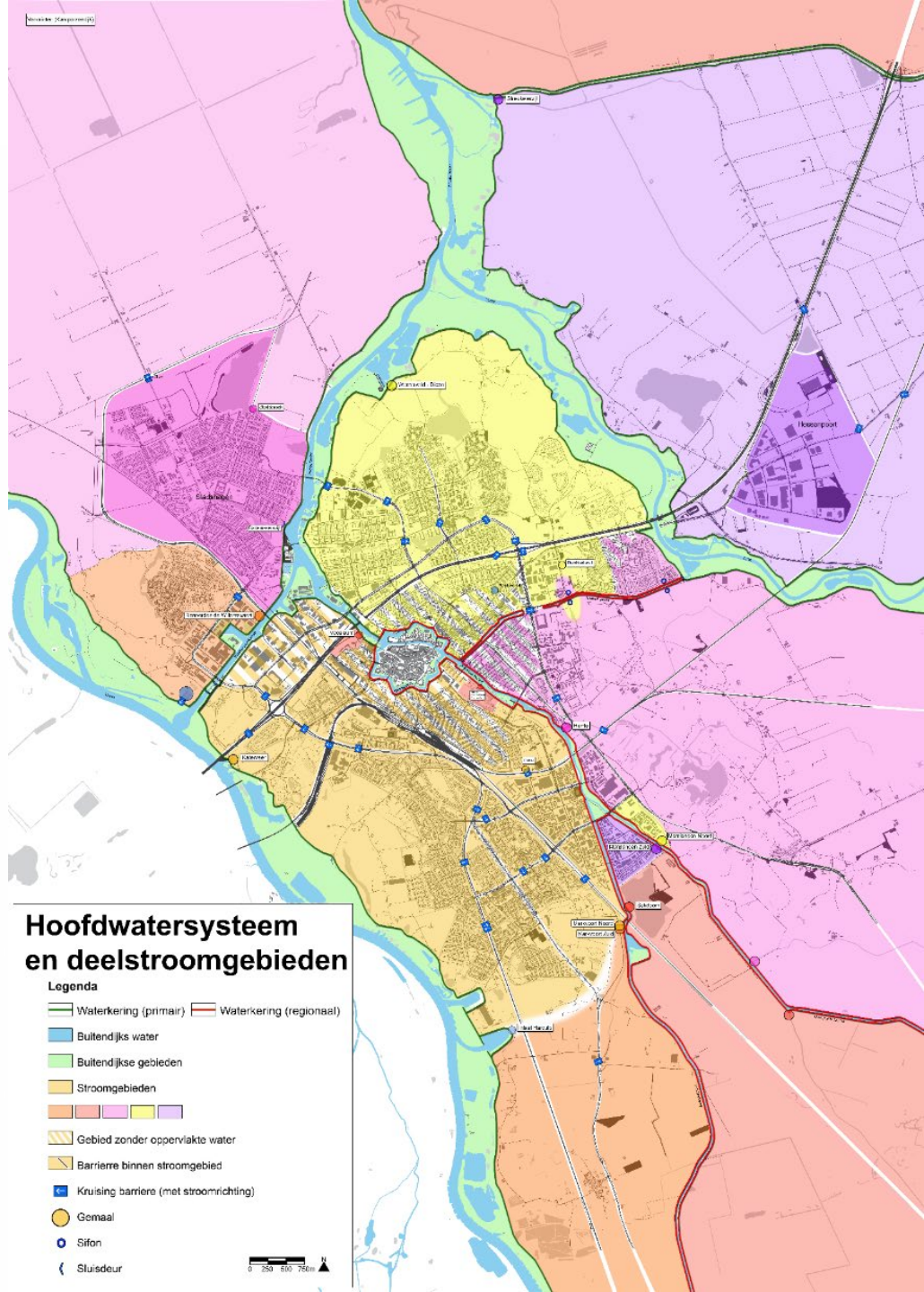
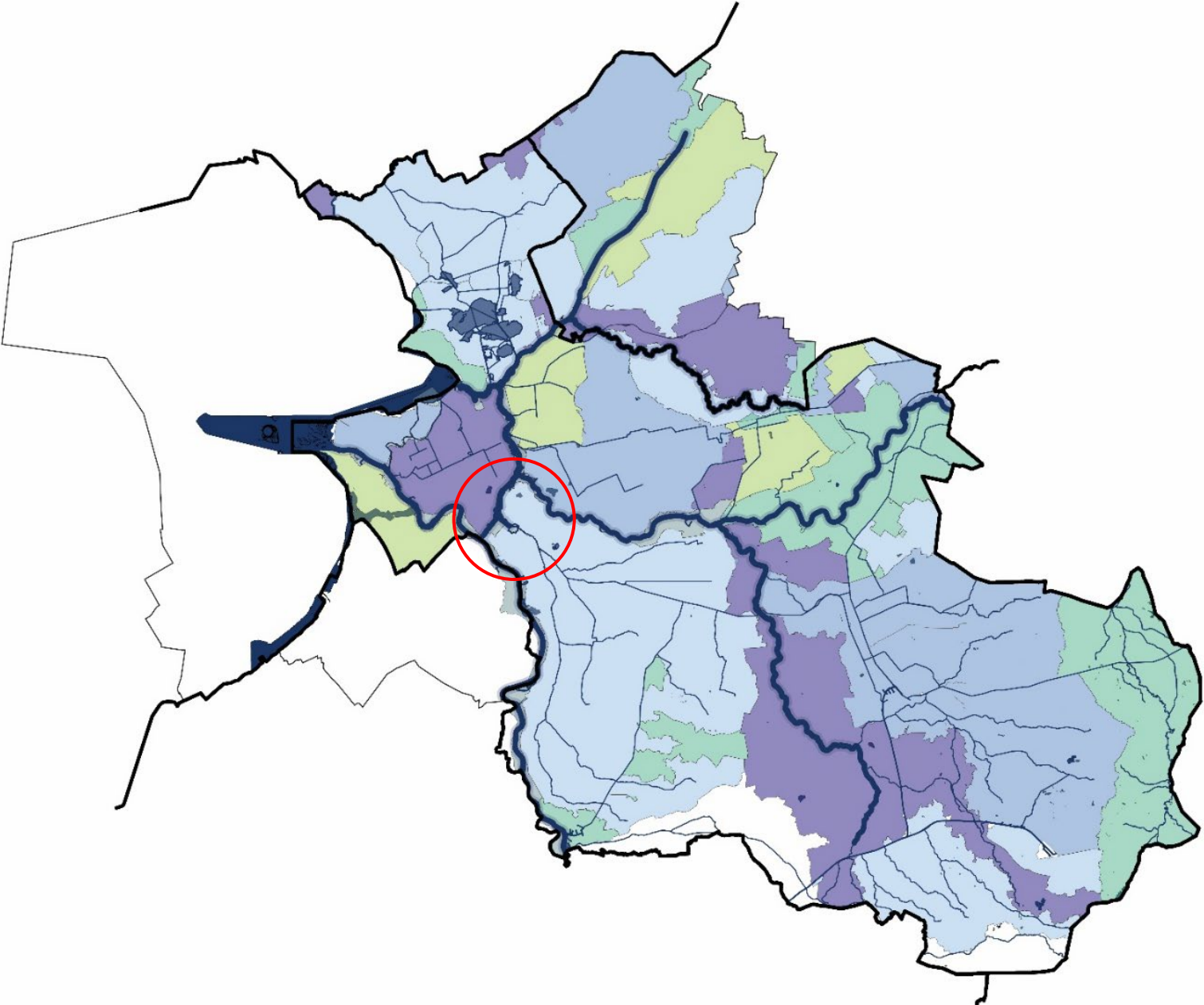


(source: Atlas of the urbanization of the Netherlands, Central office for Cultural

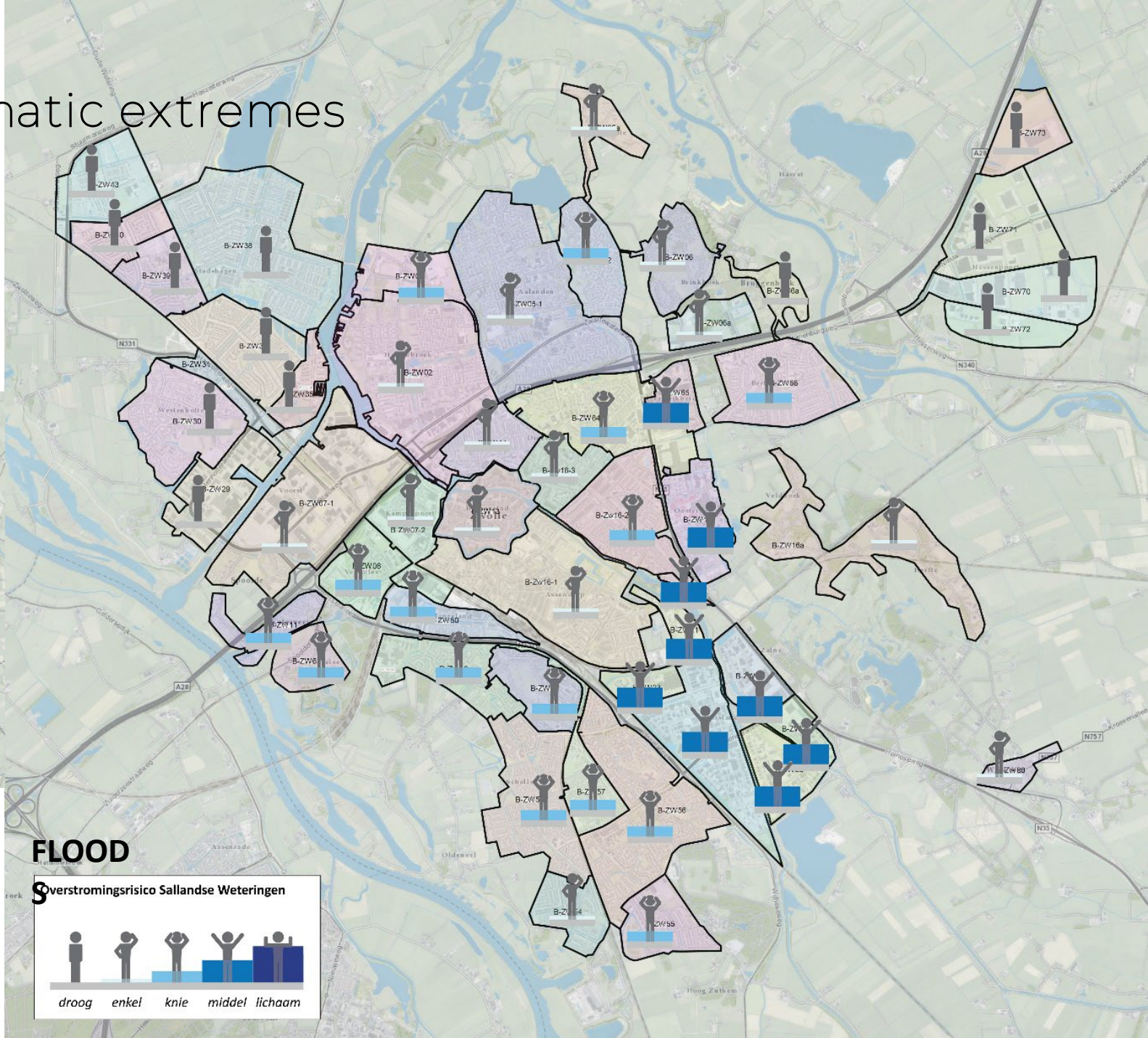
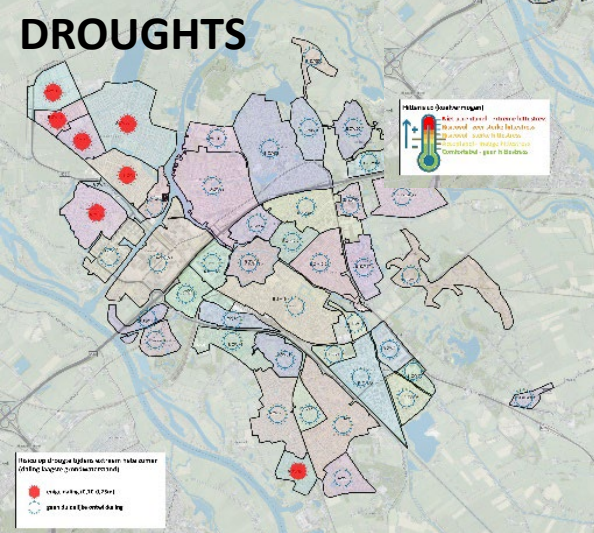
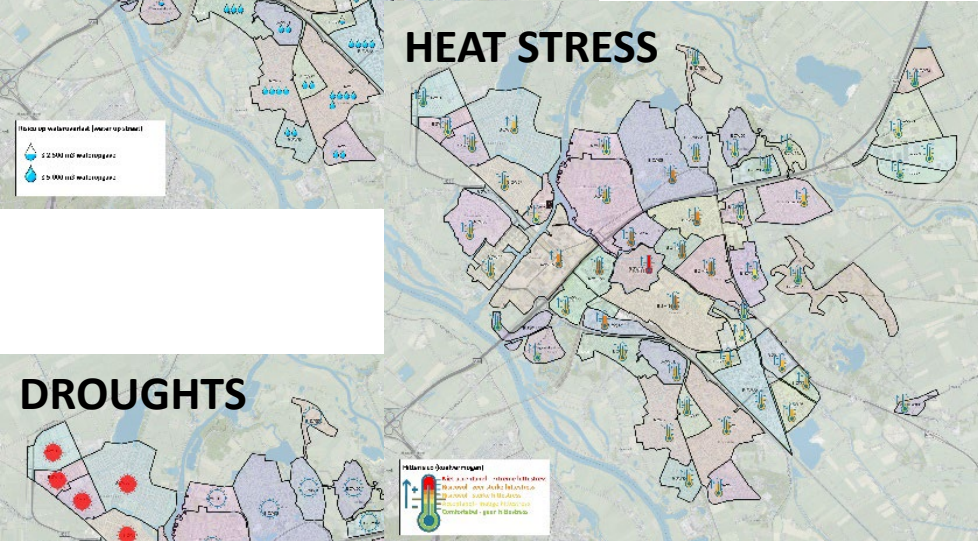
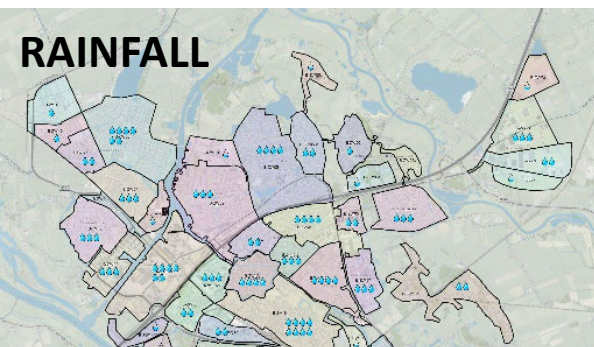


(source: Functional public space map of Zwolle, De Urbanisten, 2016)

River basins and water catchments



Vulnerability to climatic extremes



Zwolle Adaptation Strategy (ZAS): 3 levels of action



1. Neighborhoods
Sponge effect



2. Urban
Blue-Green network



3. Regional
Water robust Zwolle

Blue-Green design principle	Spatial scale	Who?
1. Sufficient urban “sponges” for detaining (using), retaining or delaying rainwater.	Buildings, streets and neighbourhoods.	Municipality of Zwolle together with its residents and actors.
2. Blue-green city network on which “sponges” can drain excess water and in which discharge and storage takes place.	Neighbourhoods, districts and city.	Municipality of Zwolle together with water board of WDODelta.
3. Emergency valves for the blue-green network and overflow areas where water can temporarily go in extreme situations.	City, region and delta.	City of Zwolle together with water board of WDODelta, province of Overijssel and neighbouring municipalities.

1. Neighborhood – sponge effect



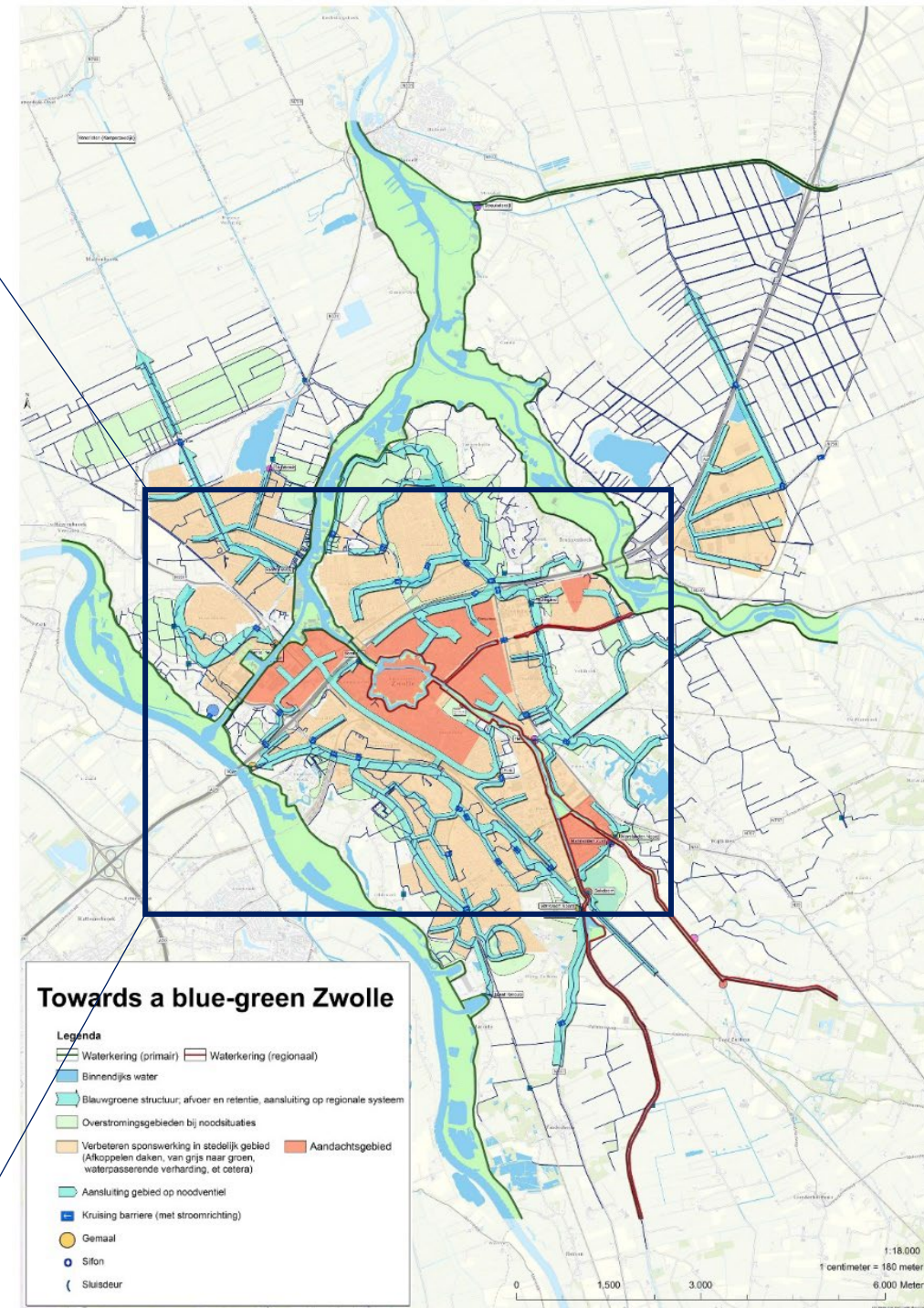
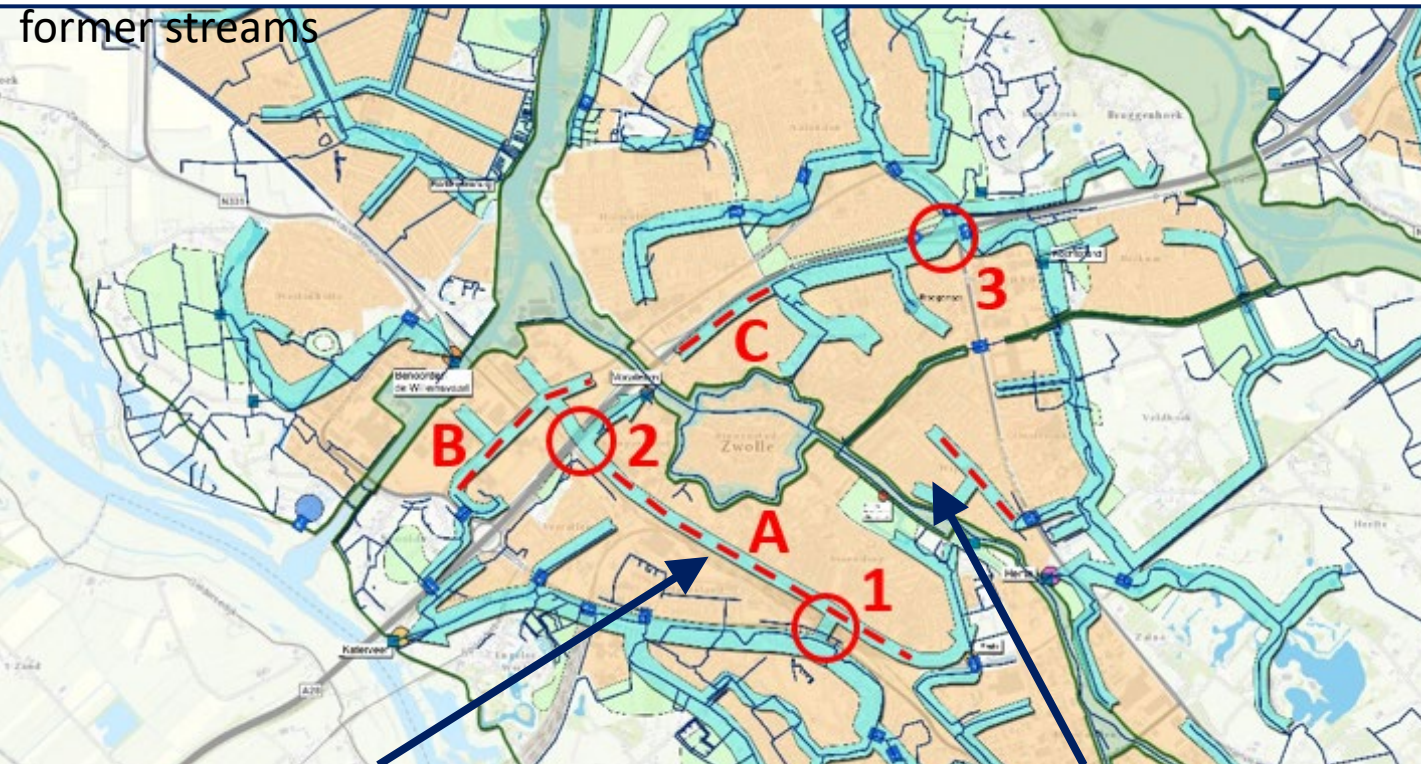
Weezenlanden reconstruction – flood proof houses



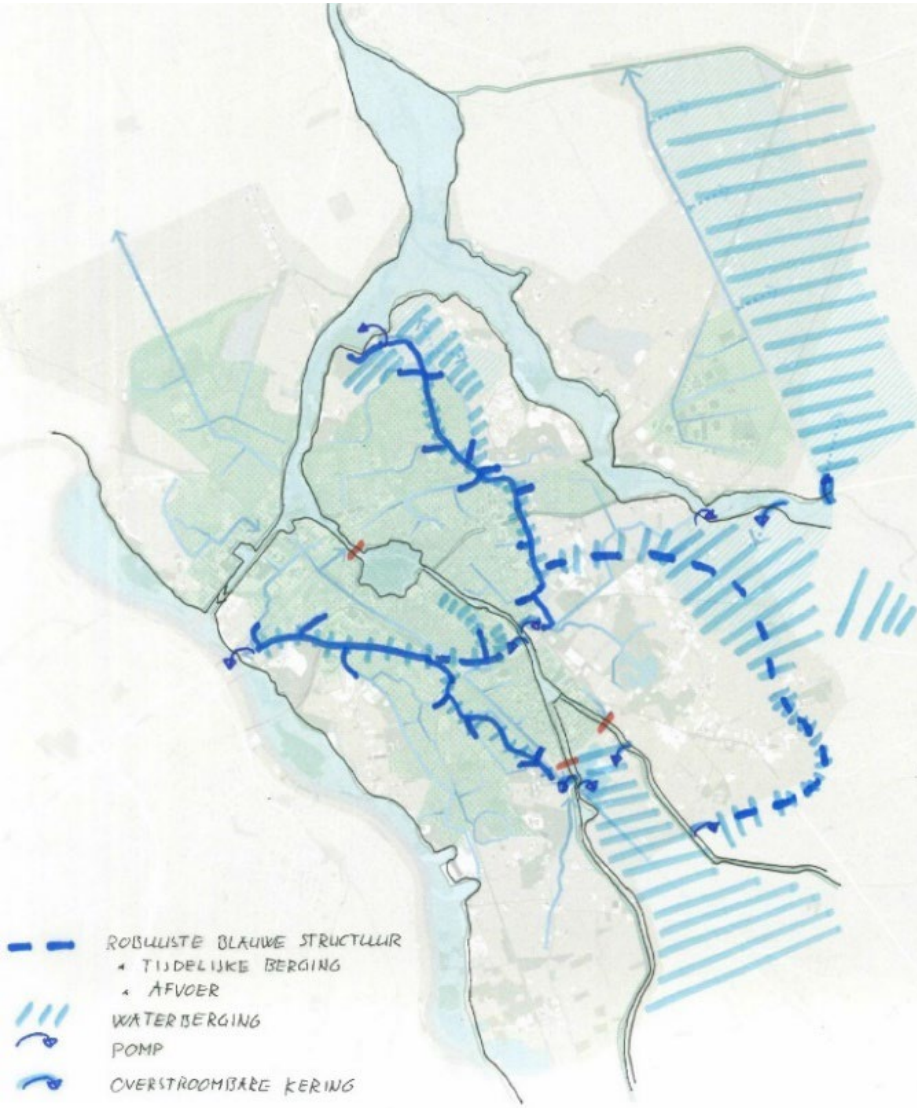
Green infrastructure and water buffer in bicycle storage

2. Urban – Blue-Green network

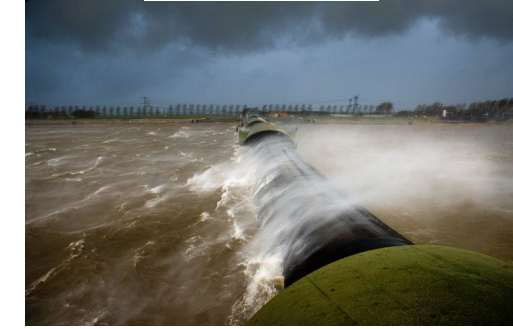
Restoring the missing links, e.g. daylighting of former streams



3. Regional – Water Robust Zwolle



STEDELIJK + LANDELIJK WATERCASCO
 EXTREME AFVOER VECHT EN/OF WETERINGEN
 IN COMBINATIE HOOG WATER ZWARTE WATER



Uiterwaardvergraving Scheller en Oldeneier Buitenwaarden

Tussen Oldendeel en de plassen van park Het Engelse Werk worden geulen gegraven, waardoor de IJssel meer ruimte krijgt en Zwolle en het achterland beter worden beschermd tegen hoogwater.

