

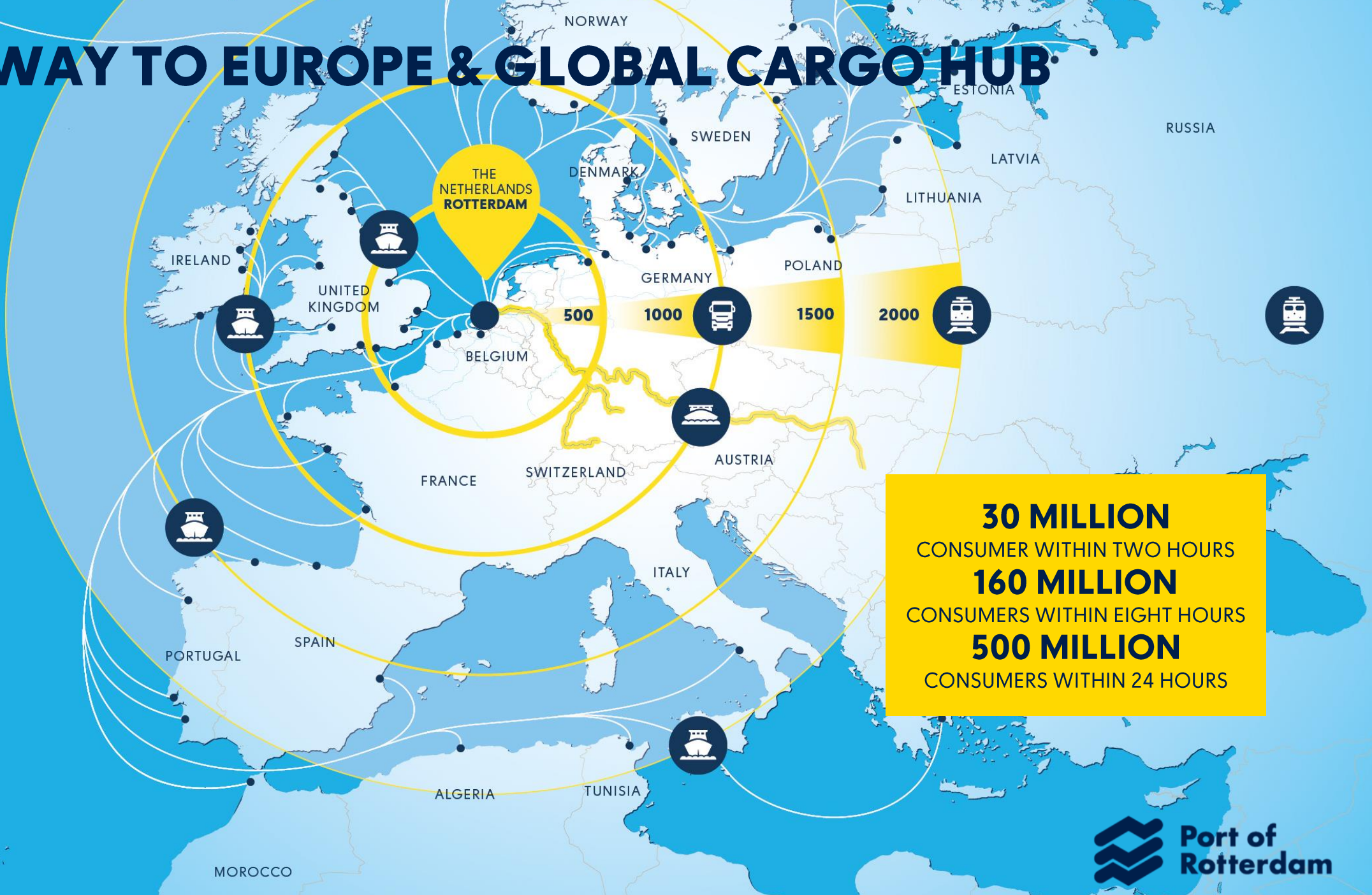
WORKING TOGETHER ON THE BEST POSSIBLE PORT MAKE IT HAPPEN



CARLINE BOREST
Strategy Consultant at Port of Rotterdam

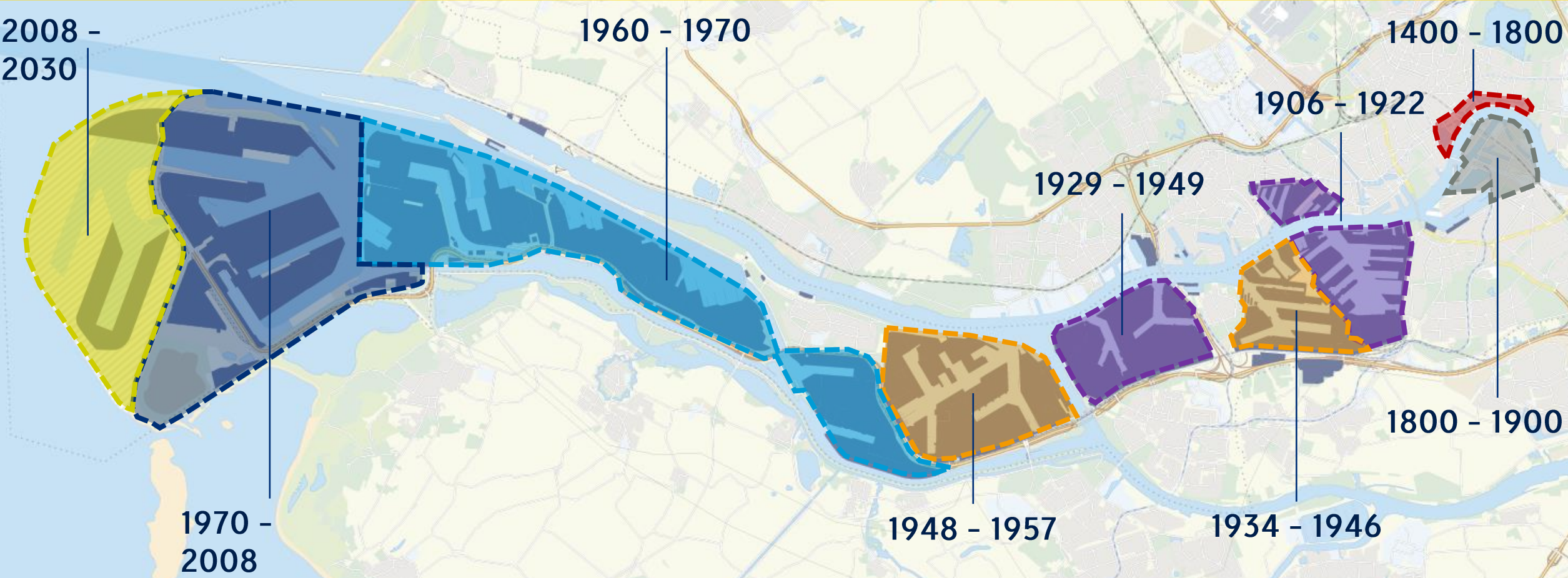


GATEWAY TO EUROPE & GLOBAL CARGO HUB



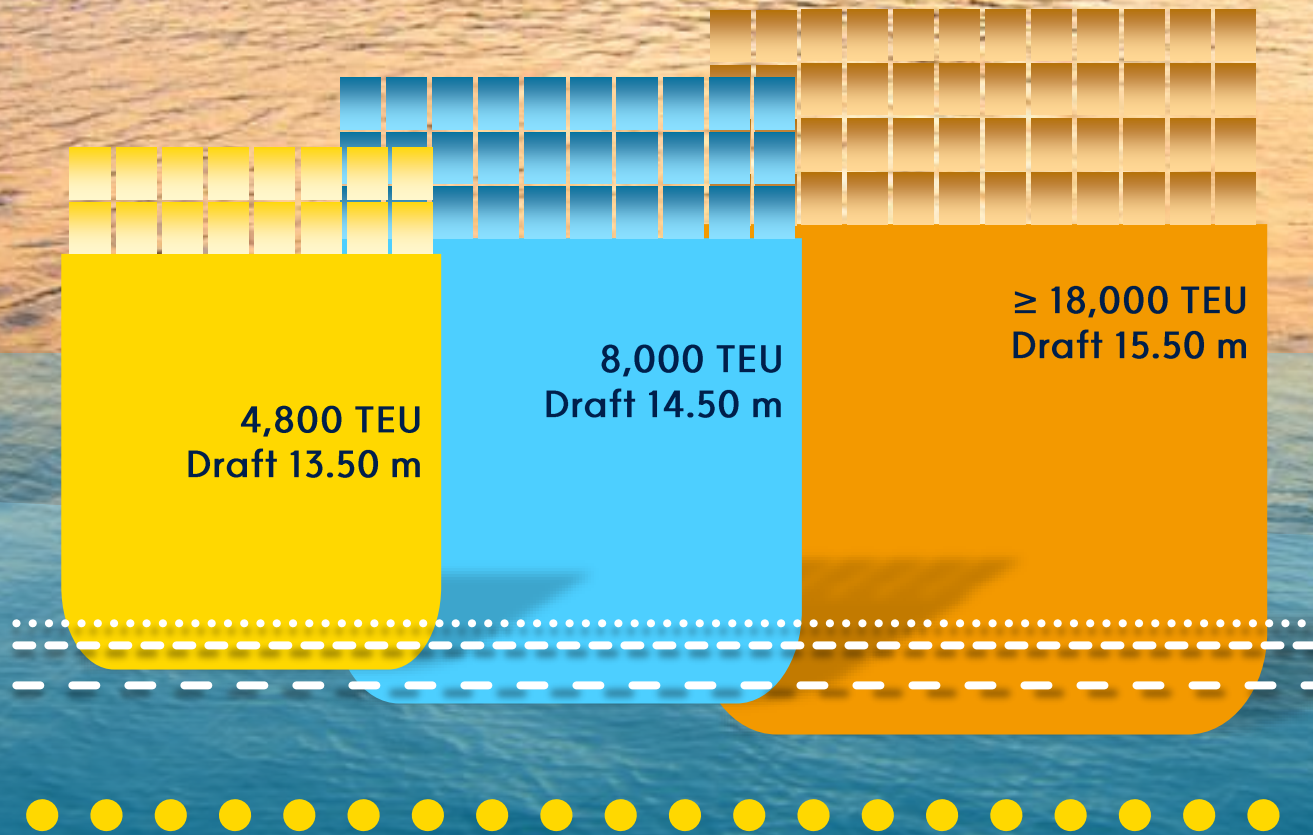
30 MILLION
CONSUMER WITHIN TWO HOURS
160 MILLION
CONSUMERS WITHIN EIGHT HOURS
500 MILLION
CONSUMERS WITHIN 24 HOURS

ROTTERDAM PORT AND INDUSTRIAL AREA



ACCESSIBILITY ROTTERDAM

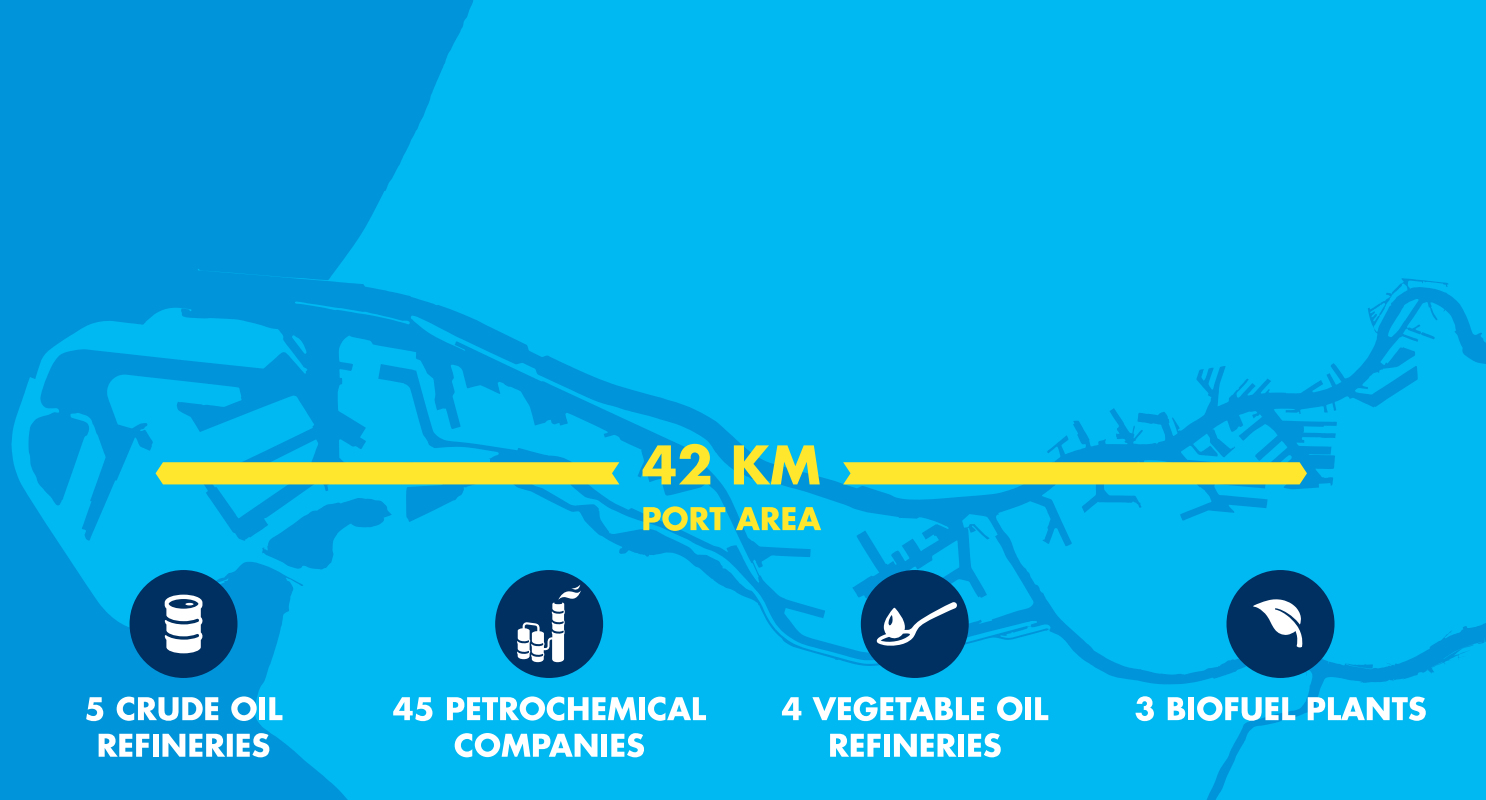
24/7 WITHOUT LOCKS



Port	Sailing time pilot to berth
Rotterdam Maasvlakte	2 hours
Hamburg	6 hours
Antwerp	6 hours

Antwerp	11.00 m
Hamburg	12.60 m
Amsterdam	13.70 m

Rotterdam > 20 m



AWARDED BEST PORT INFRASTRUCTURE

107,000
INLAND VESSELS PER YEAR

MULTIPLE UTILITY & INDUSTRIAL GAS COMPANIES

30,000
SEA-GOING VESSELS

FRONTRUNNER IN SUSTAINABILITY

CONTAINER THROUGHPUT

155 MIO TONNES

15,299,970 TEU

469 MILLION TONNES OF FREIGHT THROUGHPUT

LARGEST EUROPEAN PORT

10TH PORT IN THE WORLD

THE BEST PORT

The port is no longer the world's largest, but it does aspire to be the best, the smartest and the most sustainable.



FUTURE SCENARIOS TOWARDS 2050

Port of Rotterdam has developed possible global scenarios to explore ways forward and prepare for uncertainties ahead in a rapidly changing world.



**ECONOMICS
& GEOPOLITICS**

**ENVIRONMENT
& SOCIETY**

**TECHNOLOGY
& SUPPLY CHAINS**

EXTERNAL DRIVERS (VARIABLE)

Geopolitical stability

Government policy

Consumer behaviour

Global climate change measures

Circular economy

Corporate Social Responsibility

True cost of production

True cost of transport

GLOBAL SCENARIOS 2050



**CONNECTED
DEEP GREEN**



**REGIONAL
WELL-BEING**



**PROTECTIVE
MARKETS**



**WAKE-UP
CALL**

THE SCENARIOS EVOLVE FROM TWO PRIMARY TWO FOUR SECONDARY PATHWAYS IN 2050



Today

Primary pathways
2022-2035

Secondary pathways
2035-2050

2050

Global cooperation
1,5 degrees Celcius
Broad prosperity

Resilience and defence
Efficiency
Financial prosperity



CONNECTED
DEEP GREEN

REGIONAL
WELL-BEING

PROTECTIVE
MARKETS

WAKE-UP
CALL

THE FOUR GLOBAL SCENARIOS EACH RESULT IN A DISTINCTIVE FORECAST OF THROUGHPUT DEVELOPMENT TOWARDS 2050

CONNECTED DEEP GREEN



REGIONAL WELL-BEING



PROTECTIVE MARKETS

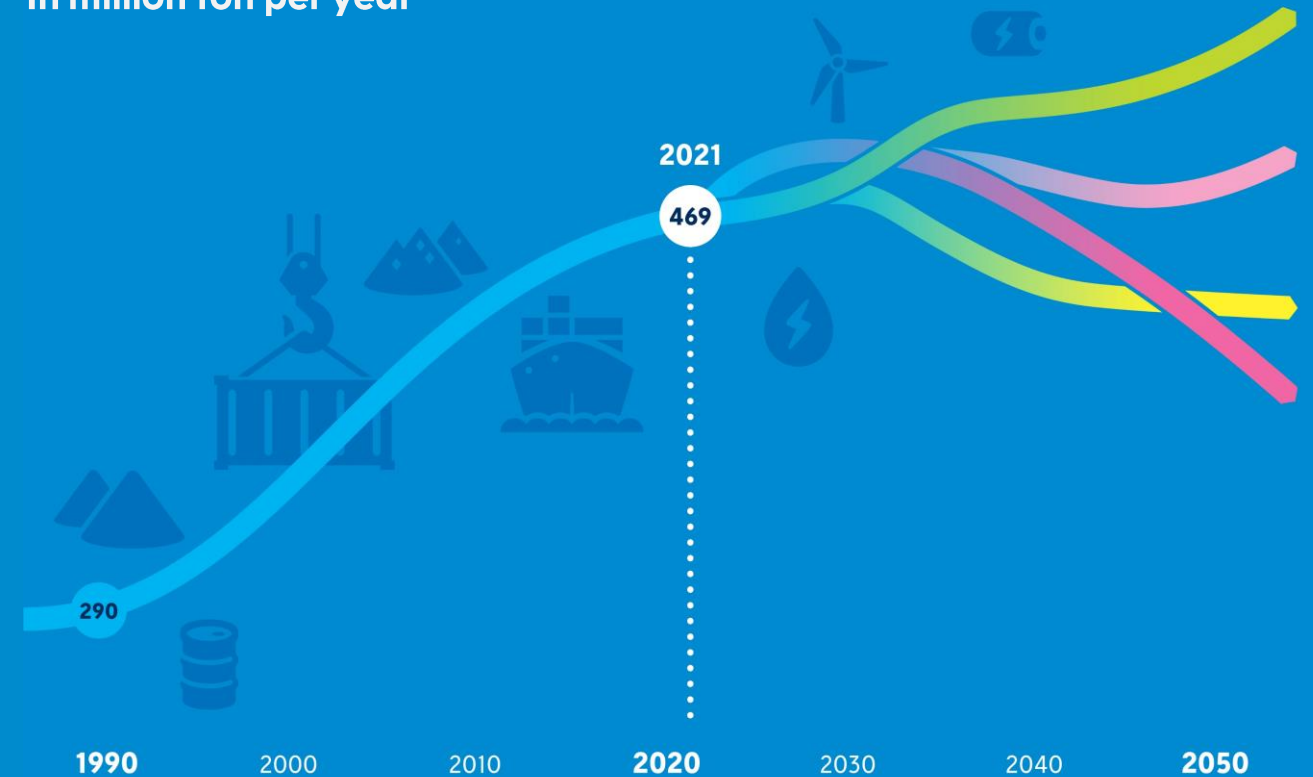


WAKE-UP CALL



THROUGHPUT PORT OF ROTTERDAM TOWARDS 2050

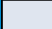
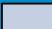



In million ton per year

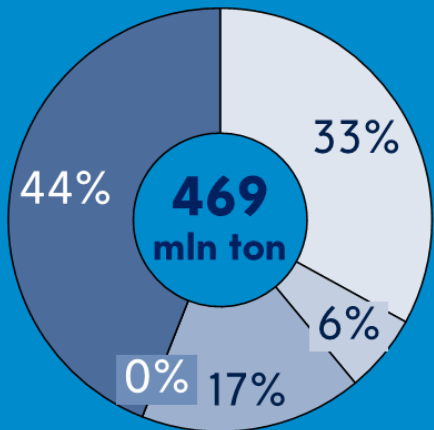


THE PORT AND INDUSTRIAL COMPLEX IN 2022 AND 2050

Throughput in million ton per year

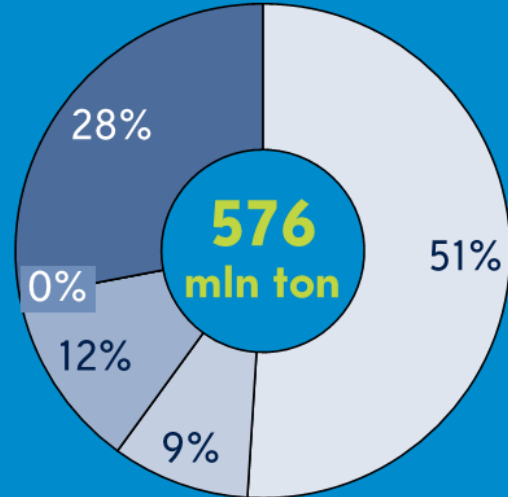
TODAY

-  Containers
-  Breakbulk
-  Dry bulk
-  Liquid bulk (fossil)
-  Liquid bulk (non-fossil)



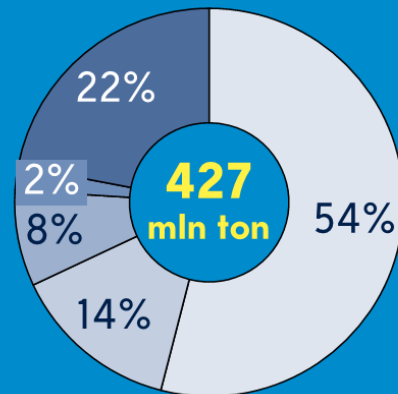
2021

CONNECTED DEEP GREEN



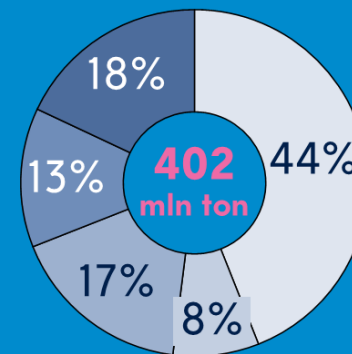
2050

REGIONAL WELL-BEING



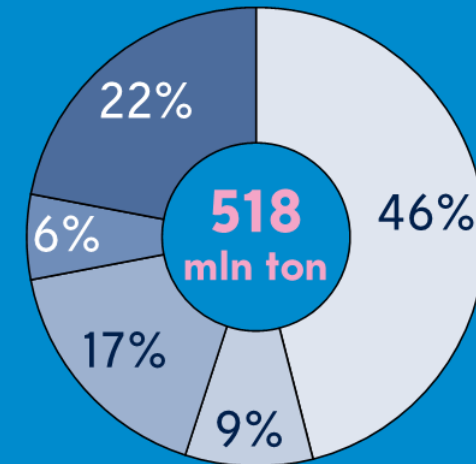
2050

PROTECTIVE MARKETS



2050

WAKE-UP CALL



2050

INVESTING IN A FUTURE-PROOF NETHERLANDS

Infrastructure is crucial for the transition.

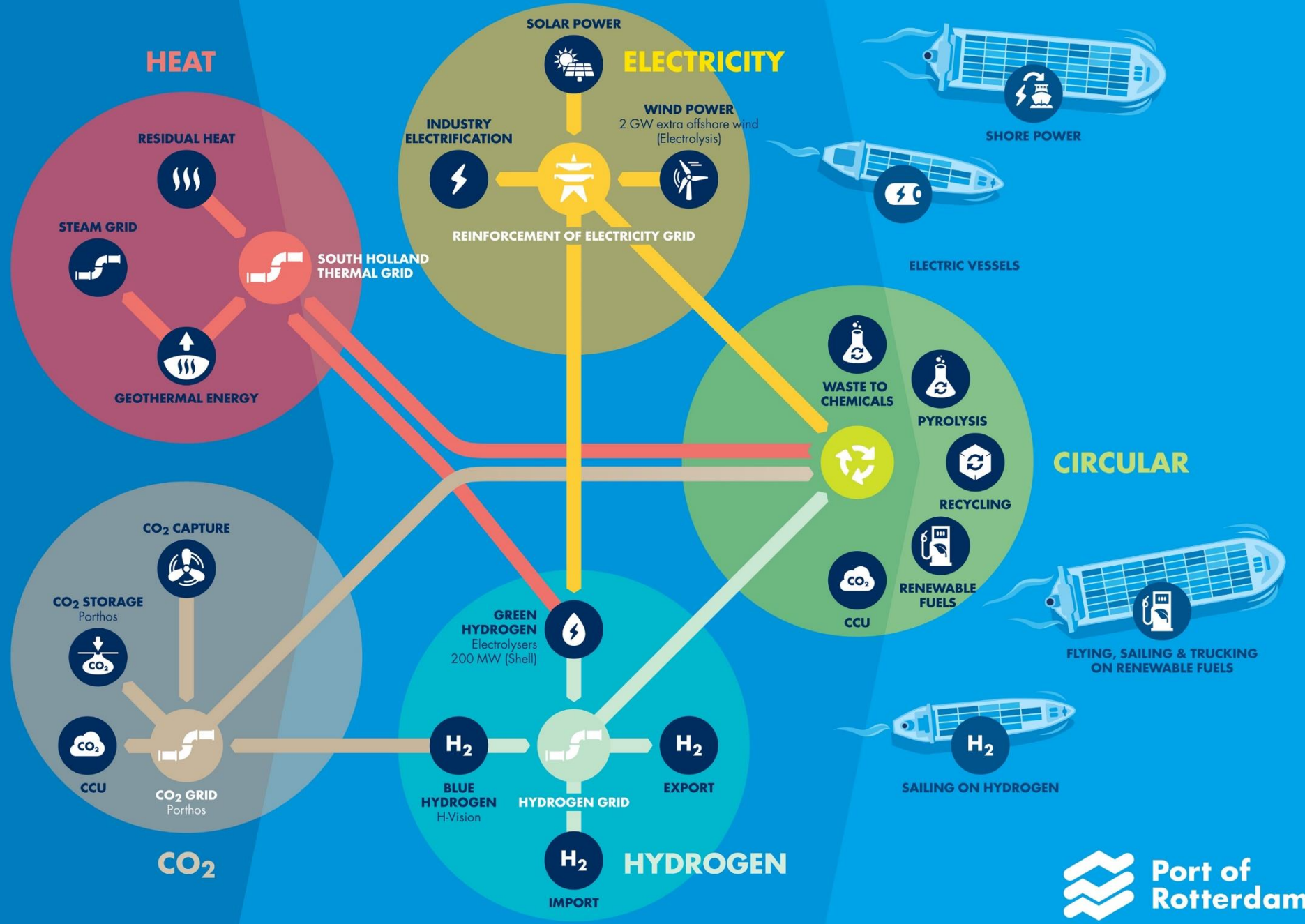
Public investments in infrastructure (€1–1.5 billion) lead to multiple private investments (€ 4–5 billion)

Current projects cause:

- 20–25% of the Dutch CO₂-reduction ambition (2030)
- Improvement air quality

Strategy is in line with

- Rotterdam Climate Agreement
- Dutch Climate Agreement
- EU Green Deal



SAFETY AND ENVIRONMENT

Sea level rise Climate Signal 2021

2100: +0,30m to +1,20m or towards +2m if Antarctic ice melting accelerates



Flood Risk Adaptation Strategies
port areas to cope with sea level
rise until 2100 and beyond



Regularly recalibration of preferred strategy with
partners Delta programme and our customers

MSc CARLINE BOREST

Strategy Consultant

Port of Rotterdam Authority



CW.Borest@portofrotterdam.com

THANK YOU FOR YOUR ATTENTION